

Prickle 2 Polyclonal Antibody
Purified Rabbit Polyclonal Antibody (Pab)
Catalog # AP57733**Specification**

Prickle 2 Polyclonal Antibody - Product Information

Application	IHC-P, IHC-F, IF, ICC
Primary Accession	Q7Z3G6
Reactivity	Rat, Pig, Dog
Host	Rabbit
Clonality	Polyclonal
Calculated MW	95615

Prickle 2 Polyclonal Antibody - Additional Information**Gene ID** 166336**Other Names**

Prickle-like protein 2, PRICKLE2

Dilution

IHC-P ~ ~ N/A
IHC-F ~ ~ N/A
IF ~ ~ 1:50 ~ 200
ICC ~ ~ N/A

Format

0.01M TBS(pH7.4), 0.09% (W/V) sodium azide and 50% Glyce

Storage

Store at -20 °C for one year. Avoid repeated freeze/thaw cycles. When reconstituted in sterile pH 7.4 0.01M PBS or diluent of antibody the antibody is stable for at least two weeks at 2-4 °C.

Prickle 2 Polyclonal Antibody - Protein Information**Name** PRICKLE2**Cellular Location**

Nucleus membrane.

Tissue Location

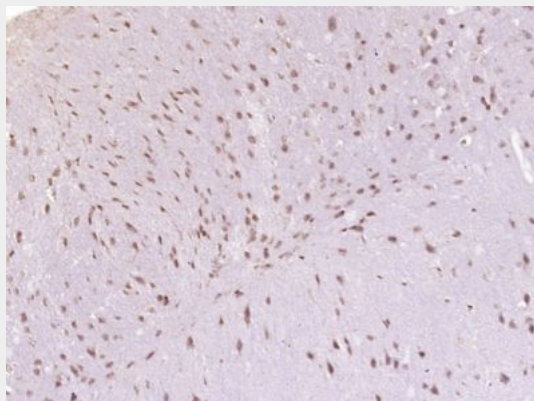
Expressed in brain, eye and testis. Additionally in fetal brain, adult cartilage, pancreatic islet, gastric cancer and uterus tumors.

Prickle 2 Polyclonal Antibody - Protocols

Provided below are standard protocols that you may find useful for product applications.

- [Western Blot](#)
- [Blocking Peptides](#)
- [Dot Blot](#)
- [Immunohistochemistry](#)
- [Immunofluorescence](#)
- [Immunoprecipitation](#)
- [Flow Cytometry](#)
- [Cell Culture](#)

Prickle 2 Polyclonal Antibody - Images



Paraformaldehyde-fixed, paraffin embedded (Mouse brain); Antigen retrieval by boiling in sodium citrate buffer (pH6.0) for 15min; Block endogenous peroxidase by 3% hydrogen peroxide for 20 minutes; Blocking buffer (normal goat serum) at 37°C for 30min; Antibody incubation with (Prickle 2) Polyclonal Antibody, Unconjugated (bs-19961R) at 1:400 overnight at 4°C, followed by operating according to SP Kit(Rabbit) (sp-0023) instructions and DAB staining.